



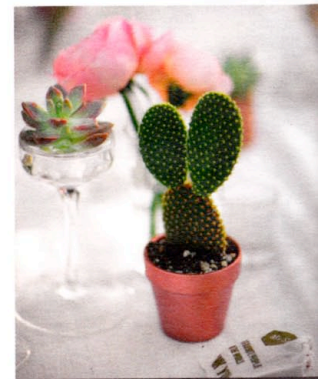
The bride found her Lazaro gown at Marina Morrison in San Francisco; the groom wore a Hugo Boss tuxedo from San Francisco-based Black Tie Tuxedos.



The bride, an event producer and project manager, designed the gold foil menus and cocktail napkins along with favor bags, which were printed by Shaw's company, Brandsmith.



Floral Theory created statement bouquets.



Decor details played off the desert setting.

MEG REED & SCOTT SHAW

Clancy Place, Rancho Mirage

THE COUPLE Living proof that not only can blind dates be successful, but also eternal, the future spouses found themselves quickly joined at the hip. "After the first date we were inseparable," confesses Reed.

THE DATE October 20, 2012

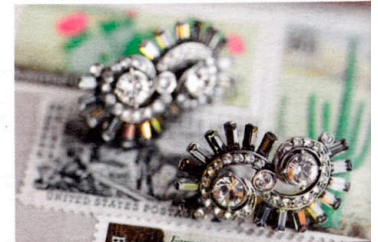
THE VENUE Reflecting their affinity for family ties, great friends and good times, the couple opted to wed amid serene desert surrounds at Reed's family estate.

THE DETAILS The pair's best friend, golden retriever Tommy Shaw, was loyally at his companions' side during the nuptials, managing to step on the train of the bride's dress more than once.

THE PARTY Sunny California fun mingled with Palm Springs glamour, lending the festive affair its convivial mood. The celebration was all about "close friends and family, twinkling lights and palm trees," Reed says. —*Brandon A. Mancilla*



Erin Taylor of Bustle Events co-designed the event with Reed.



Reed wore crystal swirl earrings by Ben-Amun.



Whoa Nelly! Catering created the three-tier cake.